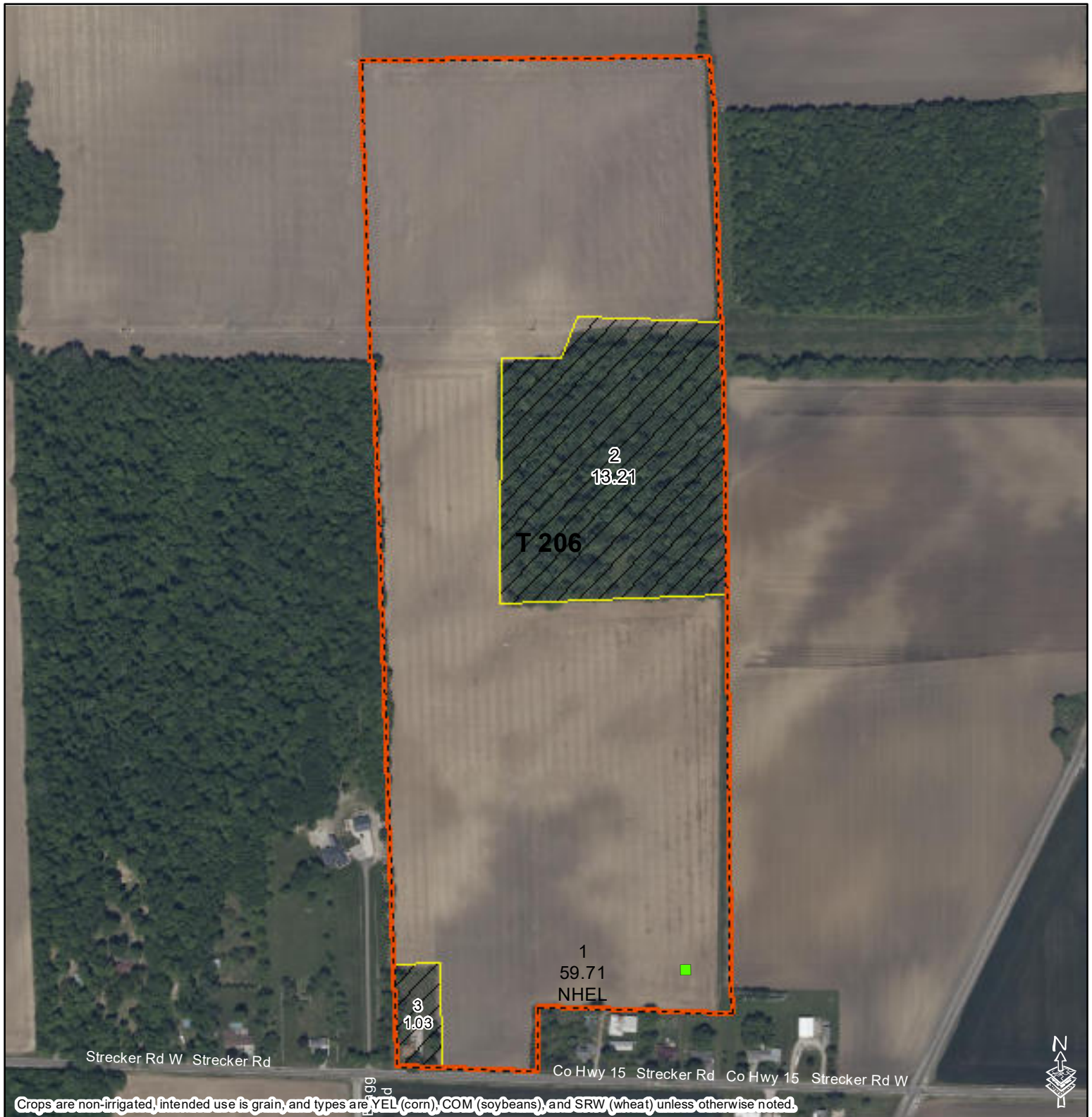




Erie County, Ohio
8 Fair Rd
Norwalk, Ohio 44857
419-668-4113 (p) 855-841-6791 (f)

2025 Program Year

Farm **3041**
Tract **206**



Crops are non-irrigated, intended use is grain, and types are YEL (corn), COM (soybeans), and SRW (wheat) unless otherwise noted.

Common Land Unit

1:5,020

- Non-Cropland
- CRP
- Cropland
- Tract Boundary

Wetland Determination Identifiers

- Restricted Use
- Limited Restrictions
- Exempt from Conservation
- Compliance Provisions

Map Created
October 31, 2024

Tract Cropland Total: 59.71 acres

NOTES:

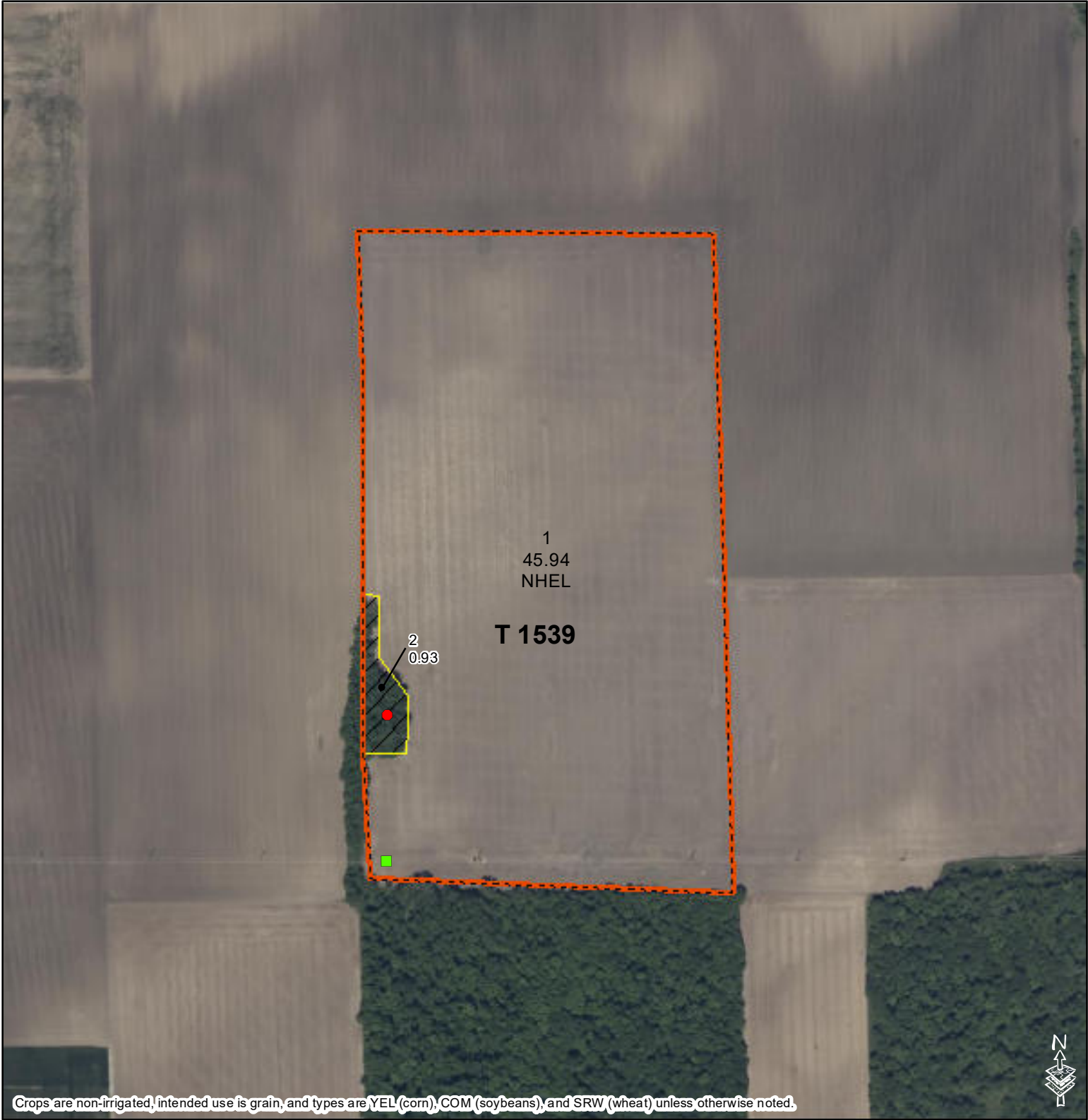
United States Department of Agriculture (USDA) Farm Service Agency (FSA) maps are for FSA Program administration only. This map does not represent a legal survey or reflect actual ownership; rather it depicts the information provided directly from the producer and/or National Agricultural Imagery Program (NAIP) imagery. The producer accepts the data 'as is' and assumes all risks associated with its use. USDA-FSA assumes no responsibility for actual or consequential damage incurred as a result of any user's reliance on this data outside FSA Programs. Wetland identifiers do not represent the size, shape, or specific determination of the area. Refer to your original determination (CPA-026 and attached maps) for exact boundaries and determinations or contact USDA Natural Resources Conservation Service (NRCS).



Erie County, Ohio
8 Fair Rd
Norwalk, Ohio 44857
419-668-4113 (p) 855-841-6791 (f)

2025 Program Year

Farm **3041**
Tract **1539**



Crops are non-irrigated, intended use is grain, and types are YEL (corn), COM (soybeans), and SRW (wheat) unless otherwise noted.

Common Land Unit

1:4,800

- | | |
|--------------|----------------|
| Non-Cropland | CRP |
| Cropland | Tract Boundary |

Wetland Determination Identifiers

- Restricted Use
- Limited Restrictions
- Exempt from Conservation
- Compliance Provisions

Map Created
October 31, 2024

Tract Cropland Total: 45.94 acres

NOTES:

United States Department of Agriculture (USDA) Farm Service Agency (FSA) maps are for FSA Program administration only. This map does not represent a legal survey or reflect actual ownership; rather it depicts the information provided directly from the producer and/or National Agricultural Imagery Program (NAIP) imagery. The producer accepts the data 'as is' and assumes all risks associated with its use. USDA-FSA assumes no responsibility for actual or consequential damage incurred as a result of any user's reliance on this data outside FSA Programs. Wetland identifiers do not represent the size, shape, or specific determination of the area. Refer to your original determination (CPA-026 and attached maps) for exact boundaries and determinations or contact USDA Natural Resources Conservation Service (NRCS).